



EDIFICE STRUCTURES

QUARTERLY NEWSLETTER

WELCOME

Hello everyone.

We're already in July, and isn't crazy how quickly the year is passing? While recent rain and storm warnings have impacted parts of the country recently, we hope you haven't been too affected by the weather and floods.

Since our last newsletter, we have several project updates to share. Read on to find out what's new!

Enjoy!
The Edifice Team.



OUR TEAM

In June, we celebrated a one-year anniversary!

Glen Nixon joined Edifice Structures last year as our Site Manager, coordinating activities at construction sites, assigning duties, and supervising the various stages. Glen has proven to be a valuable addition to the crew. We appreciate your hard work and dedication. Cheers, Glen!

[Visit our website](#) to find out more about the people behind our bridges!



WAITOMO STRUCTURE REPLACEMENTS

Last year, we completed a project to replace three key access structures within the Waitomo cave systems in Waikato.

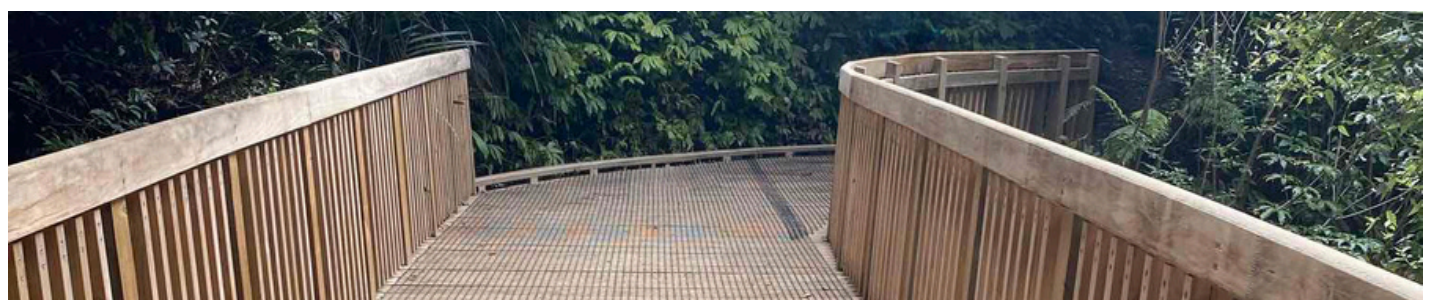
This included the Blackwater Cavers Exit Bridge, the Cave Viewing Platform at Ruakuri Caves, and the Mangapohue Bridge. These sites are in protected reserves, which presented unique challenges, from needing helicopter access for the Blackwater Bridge to working within a limestone gorge for the Mangapohue Bridge.

Our solution involved maximising off-site prefabrication and using helicopter lifts to minimise environmental impact and on-site disruption. We implemented strict safety protocols for working at height and in confined spaces, collaborating closely with the Department of Conservation and our engineering partners. The result? Safe, durable access to these significant natural landmarks.

For a more detailed look at how we delivered high-quality infrastructure in these environmentally sensitive locations, [visit our website to read the full case study on edifice.co.nz](https://www.edifice.co.nz).



"Edifice staff worked on this project with their usual efficiency and organisation. A great team to work with."
— John Stock, Senior Works Officer at DOC



NEW CASE STUDY: NAPIER RESIDENTIAL PEDESTRIAN ACCESS BRIDGE



Although our projects are mostly on hiking and cycle trails, Edifice also handles private projects, such as a pedestrian bridge providing direct street-level access to the second floor of a Victorian-style house in Napier.

The original bridge, damaged by rot, was replaced. The new fully prefabricated bridge uses 7.2m glulam beams, solid timber posts and rails, all painted to match the colour scheme of the house.

While Edifice handled the prefabrication, Drainways Contracting Ltd managed the on-site lifting/installation.

[Click here to read our new Case Study on our website.](#)

"As far as working with Edifice, they were easy to deal with, the product suited the project and all went pretty smoothly"

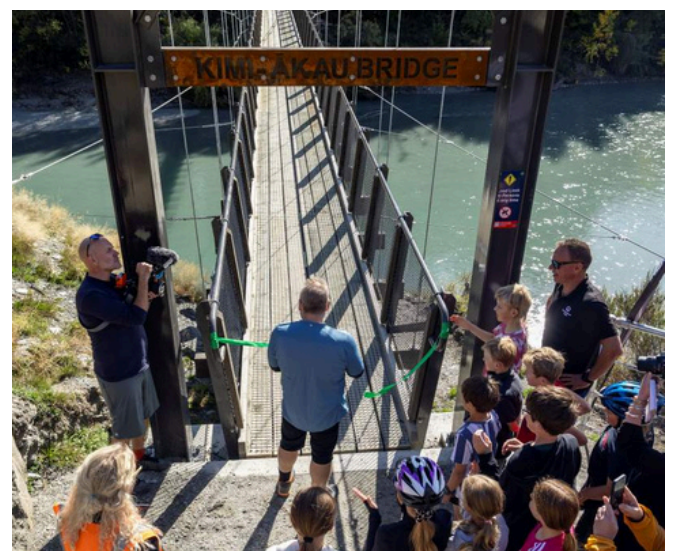
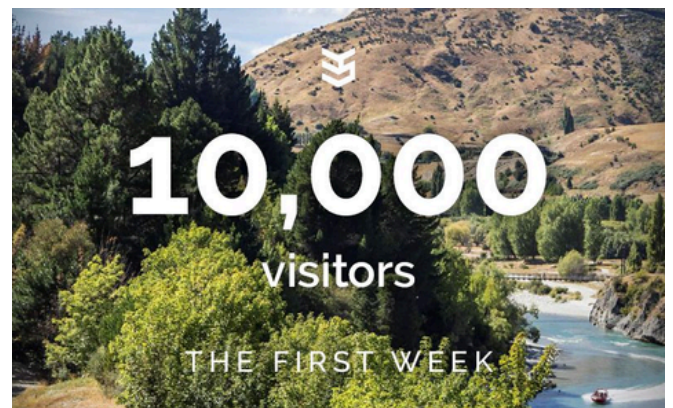
— Spencer Currie, Drainways Contracting Ltd

KIMI-ĀKAU SUSPENSION BRIDGE IS NOW OPEN

The brand-new 90m Kimi-ākau suspension bridge, built by the Edifice team on the Queenstown's Shotover Gorge Trail where the gorge meets the Tucker Beach Recreation Reserve, saw over **10,000 visitors** in its first week!

Building this bridge has been a long process, requiring expert skills and helicopters to lift concrete into place for the dead-man anchors and to string the cables before laying the decking timbers. The team has also been battling freezing temperatures last winter!

We are thrilled to see so many people now being able to experience the spectacular Lower Shotover Gorge. Stay tuned for a future case study detailing the various stage of the construction process.





STAVELEY ICE & CURLING RINK

Before the full winter season arrives, our Edifice Structures team has been hard at work at the Staveley Ice & Curling Rink. Established in 1951, this rink remains one of New Zealand's few natural ice skating locations. We're excited to contribute to such a "cool" project!

The glulam beam structure of the bridge has been prefabricated and successfully lifted into place, linking the carpark and the ice rink. We are now nearing completion, stay tuned for a Case Study!

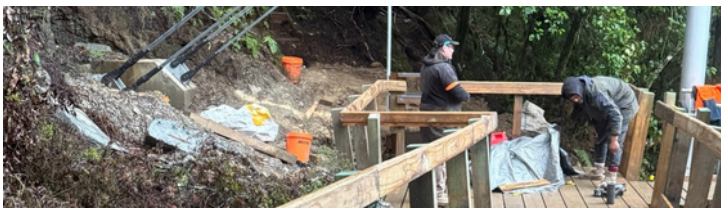


MAKARORA, BLUE POOLS BRIDGES & BOARDWALK

We're thrilled to announce the Makarora and Blue Pools bridges are now reopened! Walkers can expect to see an upgraded Blue Pools bridge, a completely new Makarora swing bridge and a new, raised boardwalk.

The Edifice team is incredibly proud of our contribution to this significant project. Despite difficult weather and challenging conditions, our great teamwork ensured a successful outcome.

It's fantastic that everyone can once again experience the beauty of New Zealand Aotearoa's natural spaces.



A few members of the Department of Conservation visited the site back in April.



A NEW BROCHURE FOR PRIVATE LANDOWNERS

Our bridge expertise extends beyond public parks and reserves. If you're considering a pedestrian or light traffic bridge for your property, get in touch!

Why choose Edifice Structures? As New Zealand's most experienced pedestrian bridge builder, we bring over 60 years of combined expertise to every project. Our bridges are built tough, designed to last, and engineered for safety and visual appeal. We guide you through the entire process, from initial concept to completion, covering design, engineering, material choices, installation, and maintenance.

Our bridges are ideal for:

- Connecting remote areas
- Farm vehicles (quads and ATVs)
- Moving livestock
- Creating walking tracks
- Adding property value
- Improving tourist and guest experiences



If you'd like to receive a digital copy of the brochure, drop us a line at enquiries@edifice.co.nz or [click here to use the online form.](#)



The Tiaki Promise

We're proud to uphold the Tiaki Promise, weaving sustainable practices into every aspect of our work – from design and construction to the long-term enjoyment of our structures. We believe that experiencing New Zealand's wilderness should go hand-in-hand with protecting it, and our pedestrian bridges are built to foster that connection responsibly.

[LEARN MORE](#)



**EDIFICE
STRUCTURES**

**Quality pedestrian bridges,
built tough in New Zealand.**

Get behind the scenes, follow us on social media



www.edifice.co.nz | enquiries@edifice.co.nz | +64 6 366 0318