



EDIFICE STRUCTURES

QUARTERLY NEWSLETTER

WELCOME

Hello everyone.

Autumn is slowly but surely unfolding. While the drought hit some parts of New Zealand hard last summer, crisp mornings and golden leaves are starting to appear. After a long break, the Edifice quarterly newsletter is back with a refreshed look and some great content we wanted to share with you. In the meantime, the Edifice team has been hard at work. Read on to find out what we've been up to in the last year or so.

Enjoy!
The Edifice Team.



OUR TEAM

Quite a few changes within the team in the last months! Here is a quick update, and we even managed to get a team photo, a rare feat!





Gizaria Knowles, our Executive Assistant, returned from parental leave after welcoming a baby girl to her family.



Tom Pearson joined as Business Manager, focusing on project and team management, alongside driving business development.



Justin Oliver, our new Construction Hand team member, brings 8 years of experience in structural engineering, fabrication, and building.



Hagar Keepa joined us a little more than a year ago as our Hammer Hand, who's proven to have a very versatile set of skills.



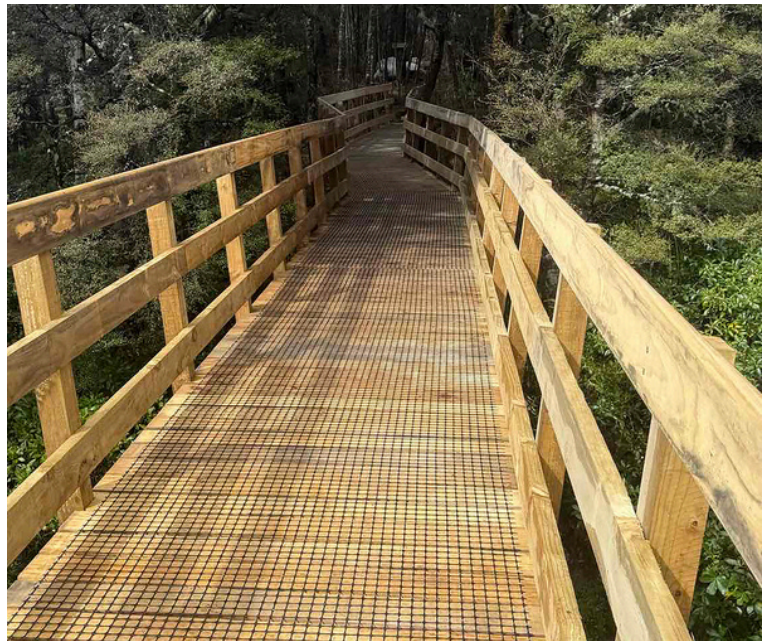
Glen Nixon is our Site Manager who's coordinating activities at construction sites, assigning duties and supervising the various stages.

TE ARA MANGAWHERO

We constructed several bridges, including a 34-metre timber span bridge on Te Ara Mangawhero, a new eco-tourism hiking and cycling trail in the Ruapehu region.

Working closely with Ngāti Rangi, this trail was built along the old tramway to minimise impact on the land, which has long been part of their rohe and is deeply rooted in the area's cultural and natural history.

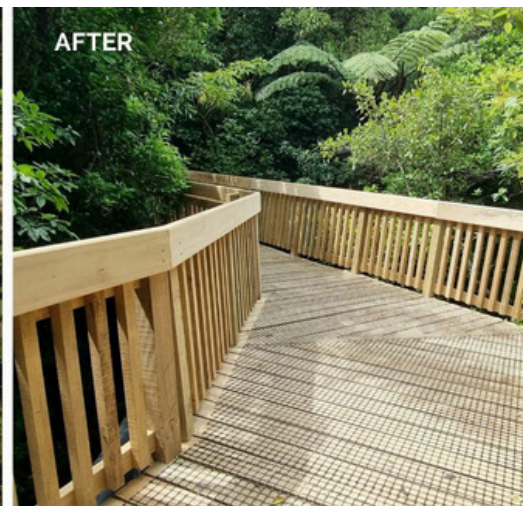
The new track will improve access to this majestic landscape of volcanic peaks and lush native bush for both locals and visitors.



ŌTARI-WILTON'S BUSH BRIDGE REPLACEMENT

We worked with Frame Group for the construction of a new bridge at Ōtari-Wilton's Bush. Ōtari-Wilton's Bush is New Zealand's only botanic garden dedicated to native plants, making it a unique and valuable site.

The old bridge was closed for safety, and now a fresh new one is ready for visitors to enjoy.





NAPIER PEDESTRIAN ACCESS BRIDGE

Although our projects are mostly on hiking and cycle trails, Edifice also handles private projects, such as a pedestrian bridge providing direct street-level access to the second floor of a Victorian-style house in Napier.

The original bridge, damaged by rot, was replaced. The new fully prefabricated bridge uses 7.2m glulam beams, wooden posts and rails, all painted in white to perfectly blend with the house.

[Click here to see more photos of the completed bridge on LinkedIn.](#)



KIMI-ĀKAU BRIDGE

Our team completed the new Kimi-ākau bridge, a part of the Queenstown Trail realignment. This bridge links the Shotover Gorge, previously jet boat accessible only.

The Shotover Gorge Trail, including the 90-metre Kimi-ākau Suspension Bridge, is a new addition to the Queenstown Trails network. The suspension bridge utilises high tensile steel cables and steel towers. The deck is constructed from a lightweight composite material to minimise the load on the cables.

Visitors can also admire the Kimi-ākau Suspension Bridge from Tucker Beach Reserve, accessible via an easy, enjoyable stroll.





POSEIDON CREEK BRIDGE

The Poseidon Creek bridge on the Milford Track is now completed. We used galvanised steel wire and hangers, along with GracoL/FRP decking. This combo means a longer lifespan and minimal maintenance. The open mesh decking allows snow and water to pass through, minimising load and keeping hikers' feet dry.

We're thrilled to have the opportunity to contribute to this iconic Kiwi destination!



MAKARORA BLUE POOLS BRIDGES & BOARDWALK

Edifice continues work at the iconic Makarora Blue Pools site. Cable replacement for the Blue Pools bridge is now complete, and the team is working on replacing the Makarora River bridge, with only weeks of work remaining.

Before closure, the Blue Pools and Makarora bridges saw an average of 550 daily visitors in January last year, with peak hours registering 75 crossings per hour, according to the DOC.

The project is nearing completion, and we look forward to seeing this iconic location open to the public once again.



7 FAMILY-FRIENDLY WALKS TO DISCOVER EDIFICE BRIDGES

Explore New Zealand's landscapes on these seven family-friendly walks, featuring Edifice bridges:

- Ruakuri Walk & Mangapohue Natural Bridge Walk, Waikato
- Ngā Manu Nature Reserve, Ngā Manu Bridge, Wellington
- Great Barrier Island Kaiaraara Track, Kaiaraara Suspension Bridges, Auckland
- Tucker Beach Trail, Kimi-ākau Suspension Bridge, Otago
- The Timber Trail, Maramataha Suspension Bridge (Quick Route), Manawatū-Whanganui
- Three Mile Pack Track – Ōkārito Coastal Walk, Three Mile Lagoon Suspension Bridge, West Coast
- Wainui Falls Track, Wainui Falls Suspension Bridge, Golden Bay

[Click here to read the detailed article on our blog.](#)



The Tiaki Promise

We're proud to uphold the Tiaki Promise, weaving sustainable practices into every aspect of our work – from design and construction to the long-term enjoyment of our structures. We believe that experiencing New Zealand's wilderness should go hand-in-hand with protecting it, and our pedestrian bridges are built to foster that connection responsibly.

[LEARN MORE](#)



**EDIFICE
STRUCTURES**

Quality pedestrian bridges,
built tough in New Zealand.



www.edifice.co.nz | enquiries@edifice.co.nz | +64 6 366 0318